

062642

RECEIVED

LARAMIE COUNTY

South Quarter corner Section 29 T18N R65W CHEYENNE, WY.

CERTIFIED LAND CORNER RECORDATION

'89 OCT 5 PM 3 01

DESCRIPTION OF CORNER EVIDENCE FOUND, AND ORIGINAL RECORD (if known)

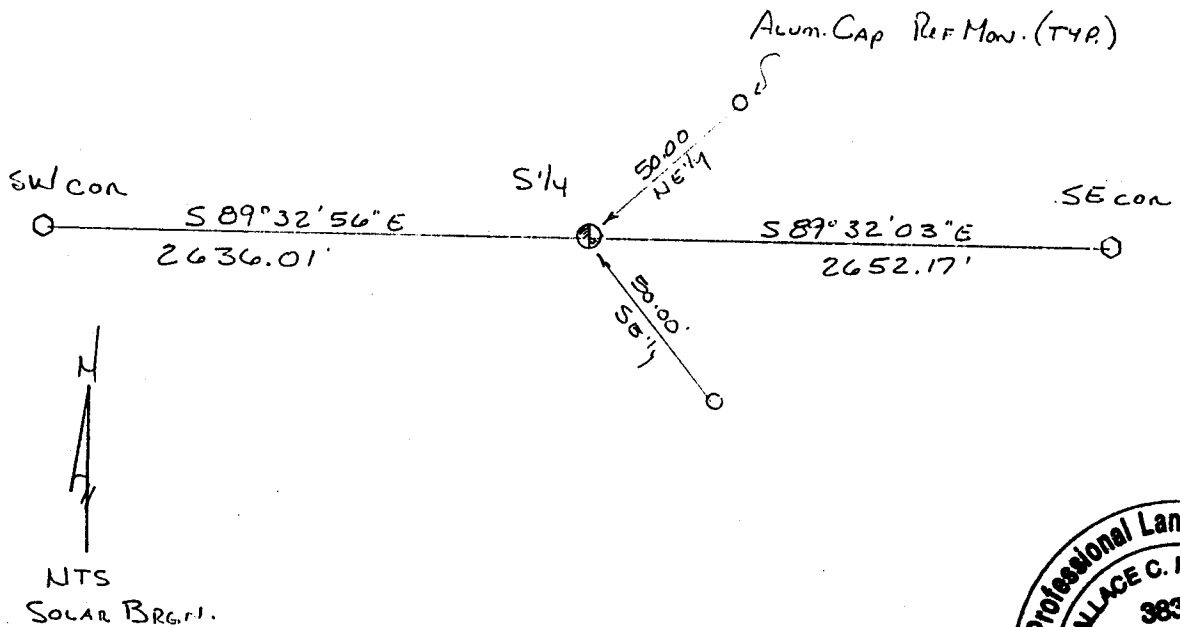
Found the original 16x12x4 limestone. Accepted the stone as the corner.

DESCRIPTION OF MONUMENT AND ACCESSORIES ESTABLISHED TO PERPETUATE THE ORIGINAL LOCATION OF THIS CORNER:

IN place of the corner found, we set a 30" long No5 rebar with a Corps of Engineers Brass cap. Placed the original stone along side and raise a mound of stone. Tied to alum. cap Ref. Mon set on No4 rebar, as shown in the sketch below.

AUG 25 1989

SKETCH, WITH COURSE AND DISTANCE TO ADJACENT CORNER IF DETERMINED IN THIS SURVEY. (May Sketch or Paste Reproduction on Reverse Side.)



I, Wallace C. Muscott certify that I have carefully performed or reviewed the work done on the diagrammed corner as reported on this recordation form and approve the same.

Wallace C. Muscott
Signature of Surveyor

3830
Registration No.

STATE OF WYOMING,
Office of Clerk and Recorder,
County of _____

This "corner record" was filed for record on the _____ day of _____, 19____, was noted on the cross-index plat and is assigned page No. _____, in book No. _____.

County Official			
Cross Index No. <u>V 7</u>	T. <u>18N</u>	R. <u>65W</u>	<u>6th</u> Mer.
_____	T. _____	R. _____	Mer.
_____	T. _____	R. _____	Mer.
_____	T. _____	R. _____	Mer.
_____	T. _____	R. _____	Mer.
_____	T. _____	R. _____	Mer.
_____	T. _____	R. _____	Mer.